

Spot the hidden danger

Distributed by :

•FOKUS[®] DIAGNOSTIC

PT. FOKUS DIAGNOSTIC INDONESIA

Komplek Majapahit Permai B 117 - 118,
Jl. Majapahit Raya, Jakarta Pusat 10160

Telp. (021) 3853377

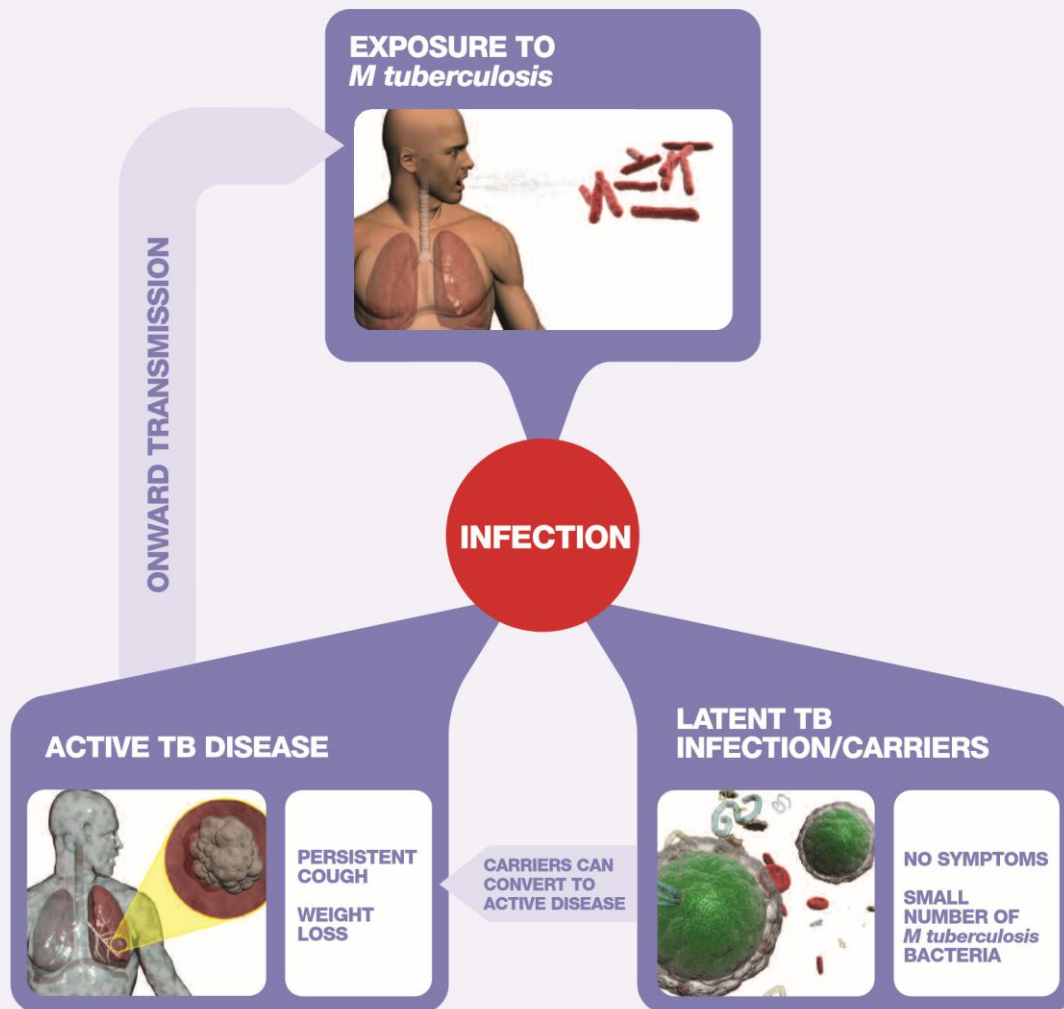
Fax. (021) 3809527

Email info@fokusdiagnostic.com

HOTLINE 021 96538890

T-SPOT[®] TB

WHERE THE T-SPOT.*TB* ASSAY SHOULD BE USED



TEST WITH THE T-SPOT.*TB* ASSAY

TB SUSPECTS

Traditional diagnostic methods may be inconclusive.

If the T-SPOT.*TB* assay is negative look for alternative diagnosis.

A positive result with the T-SPOT.*TB* assay increases likelihood of TB but may be due to LTBI.

USE IN PLACE OF TST

CONTACT TRACING SCREENING AT-RISK GROUPS

- Test contacts of index case to identify LTBI.

Screening at-risk groups

- Healthcare workers: avoid risk of onward transmission to vulnerable patients and others in a healthcare setting.
- Test immunosuppressed groups (HIV, renal disease, transplant, drug induced) as their risk of conversion to active disease is greatly increased.

If the T-SPOT.*TB* assay is positive consider chemoprophylaxis to prevent conversion to active disease in the future.

"Tuberculosis control and elimination strategies must aim at diminishing the incidence and prevalence of latent infection to reduce the pool of those with tuberculosis infection from which future cases of tuberculosis will emanate." WHO, *Eur Respir J* 2002;19:765-775

The T-SPOT.*TB* assay is a highly sensitive and specific test that requires a simple blood sample collected in either a lithium heparin or a Cell Preparation Tube.

For further information contact:

Distributed by: